

Build the project structure

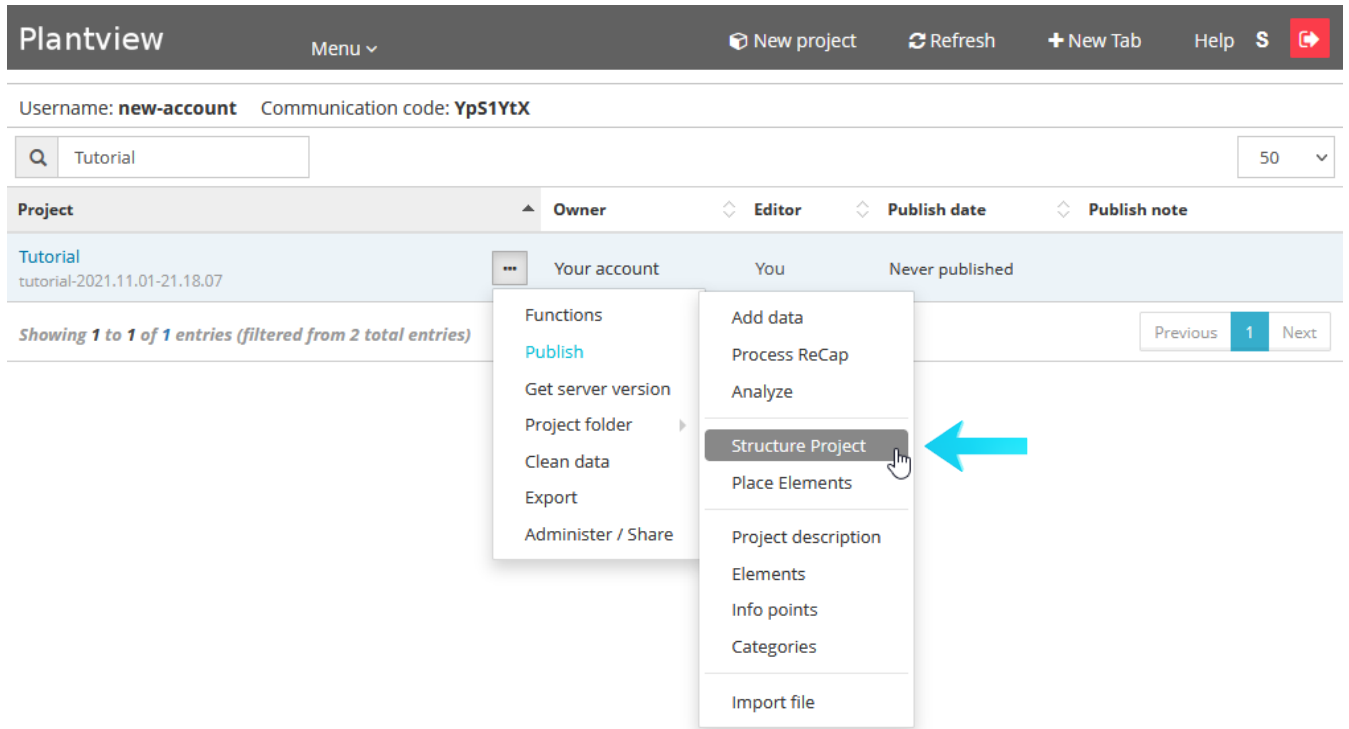
In this tutorial, you will create the structure for your project.

Prerequisite: You have analyzed your data (Tutorial 4)

Use Plantview Workspace

1.

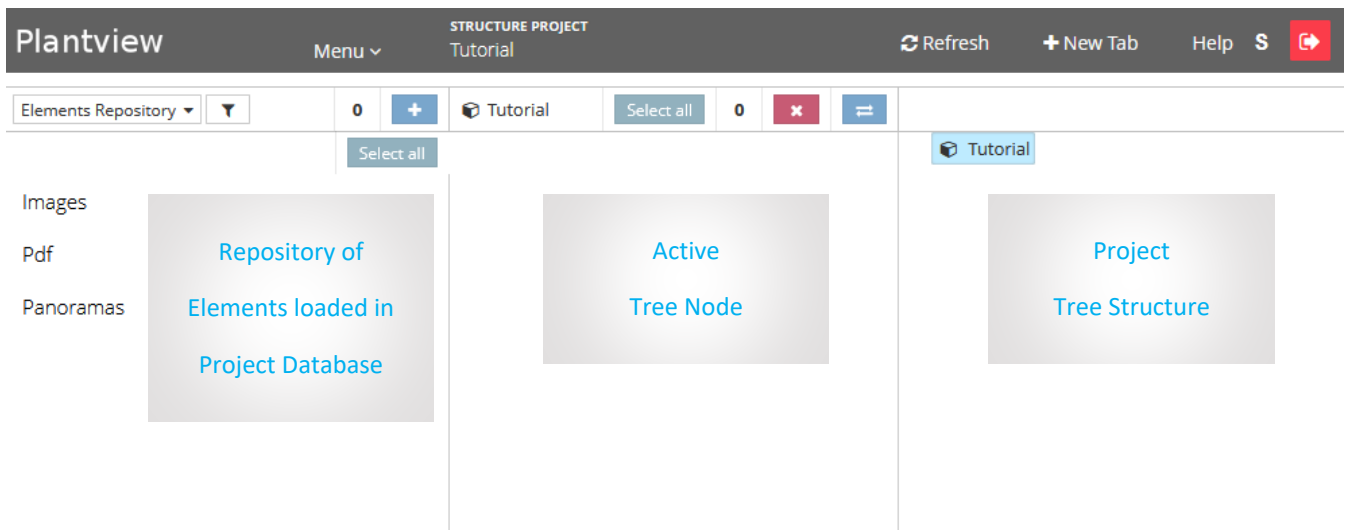
From the PROJECT LIST press **Functions/Structure Project** to enter the STRUCTURE PROJECT mode.



2.

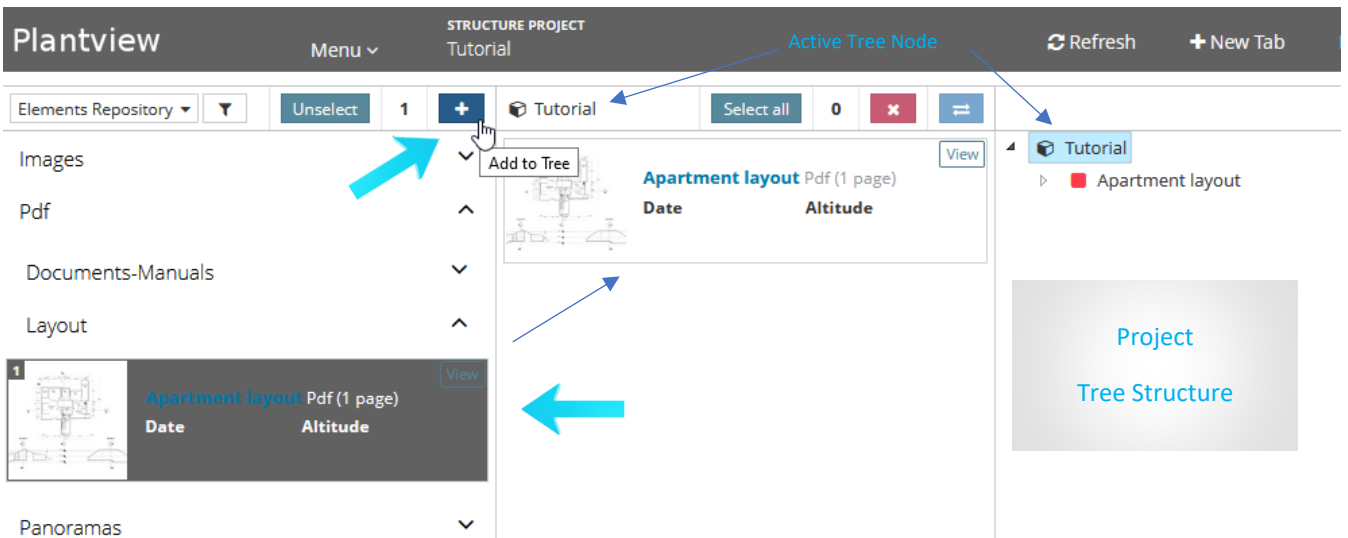
The STRUCTURE PROJECT mode is divided into 3 parts.

- On the left side are the Elements loaded to the project database through the Analysis.
- On the right is the soon-to-be-created project structure tree.
- In the center is the active selected tree node (layer) with its content.



3.

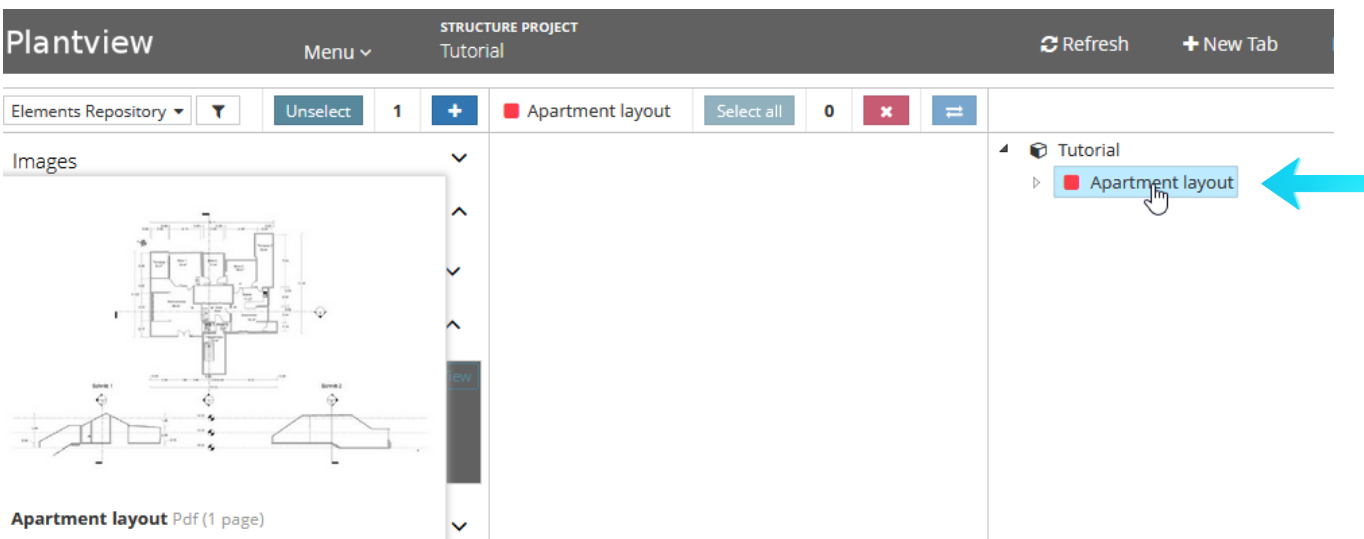
Select an image or pdf from the Elements section on the left and transfer it to the active node to create a layer by pressing on the + sign. Once transferred to the active node it will appear in the tree structure on the right section.



4.

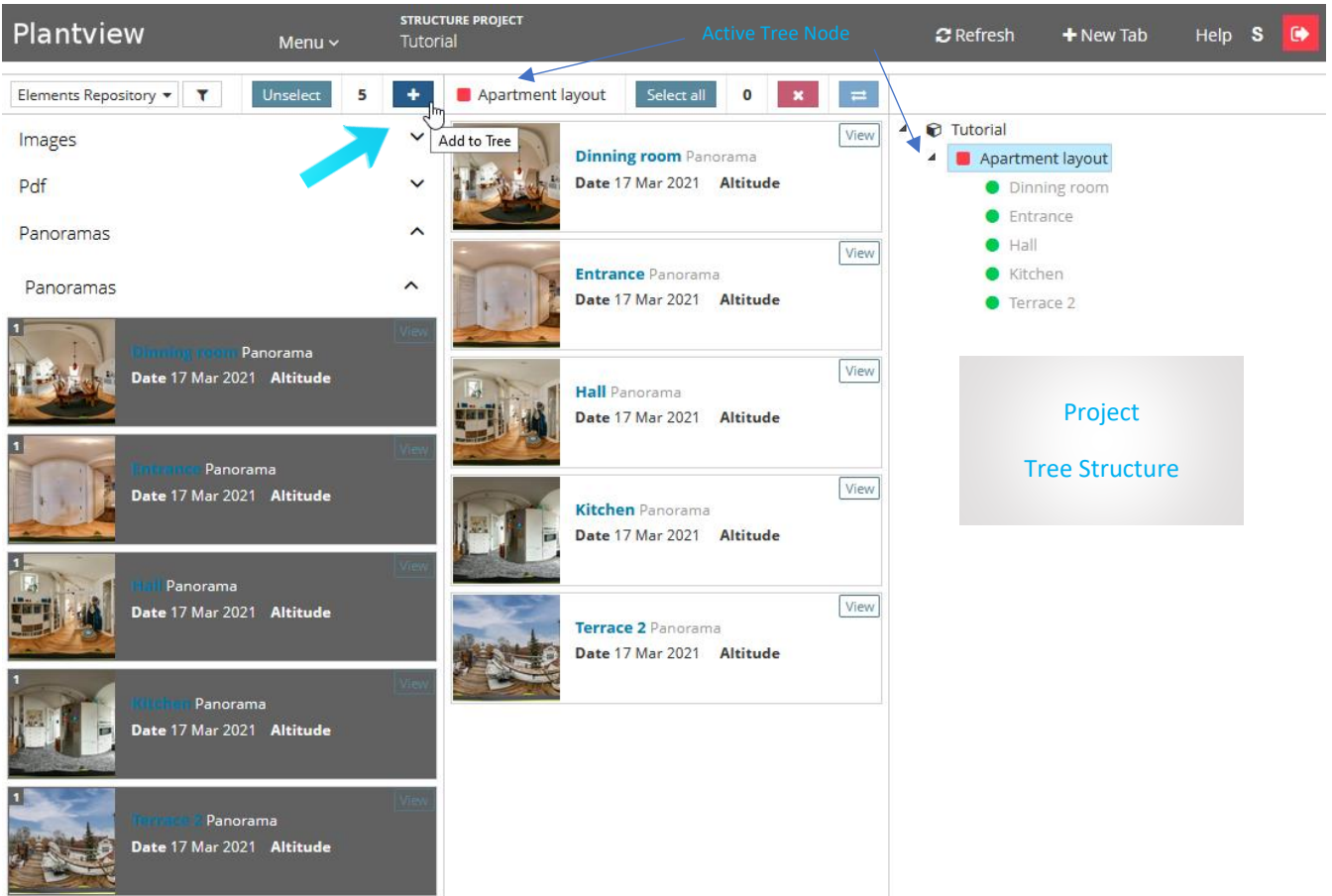
Activate a new layer by double-clicking on the element on the right section of the tree.

Now the active node in the center has been updated and is ready for input.



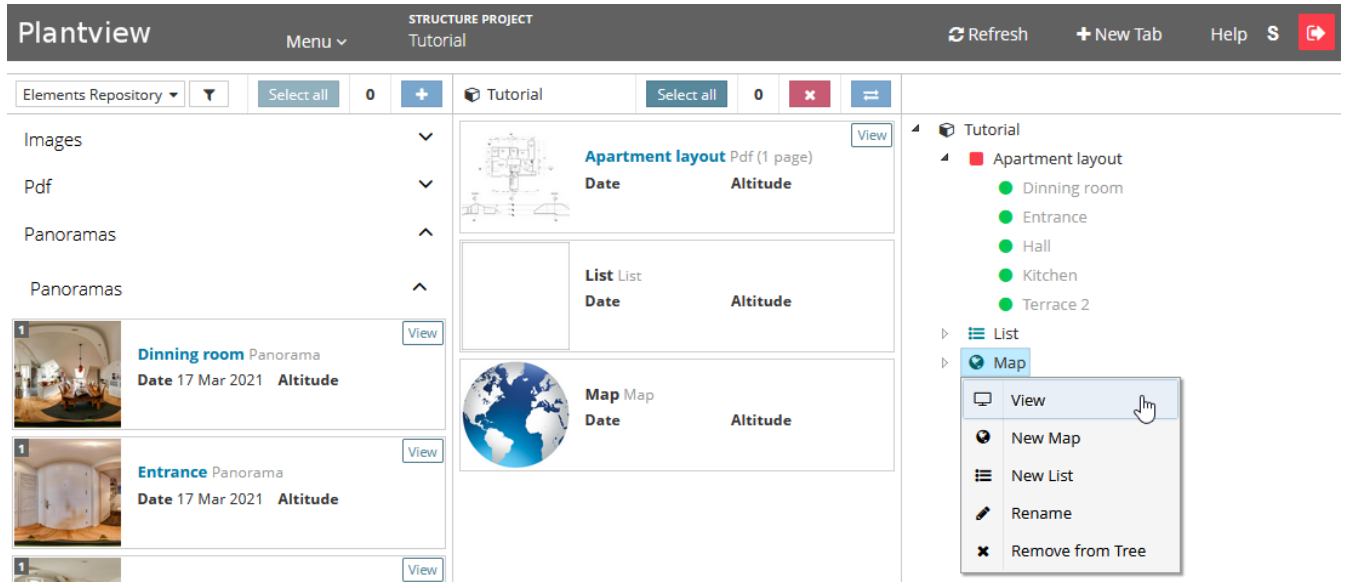
5.

Repeat the same procedure to add more layers, images, panoramas, scans, or multiple documents to the active node.



6.

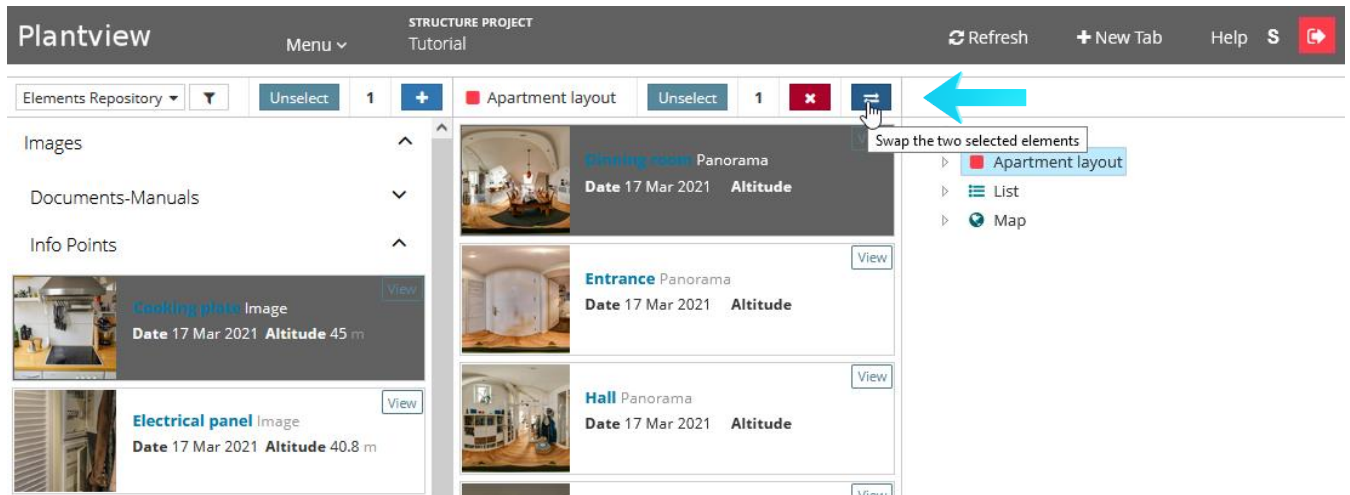
A right mouse click on the project tree gives you additional options. Drag and drop will move items in the tree



View	View the element
New Map	creates a world map that can be used to place elements and information points
New List	creates a non-visual folder that can hold elements
Rename	physically renames the element
Remove from Tree	removes the element from the tree

7.

By selecting one component from the elements (left) and one component from the active tree node (center) you can swap the two selected components and modify your tree structure.



8.

Filters can be used to refine the elements in the repository.

The **Elements Repository** drop-down list filters the elements processed during an analysis.

